



20TH COMNAP SYMPOSIUM 2023
Antarctic Innovations and Collaborations
Hobart, Australia, June 2023



KOREA'S INTERNATIONAL AIR NETWORK COLLABORATION FOR THE PAST 35 YEARS IN KING GEORGE ISLAND

MINGU KANG (mgkang@kopri.re.kr)
 SEONUNG CHOI (suchoi@kopri.re.kr)

ABSTRACT & SUMMARY

The Korean Antarctic Research Program (KARP) started in 1988 with the inauguration of King Sejong Station (KSJ), King George Island, Antarctica. For the past 35 years of KSJ station operation, Korea Polar Research Institute (KOPRI), has been conducting and maintaining active collaboration and cooperation in the field of inter-continental flights for the transportation of cargo or personnel between Antarctic gateway city (Punta Arenas) and King George Island (KGI) with MNAPs such as Brazil, Chile and Uruguay.



In the first phase during 1988-2003, KOPRI was not capable of operating inter-continental flights for KSJ, most of inter-continental transportation operations were covered by air force flights (C-130) of Brazil, Chile, and Uruguay including logistics support of Navy vessels.

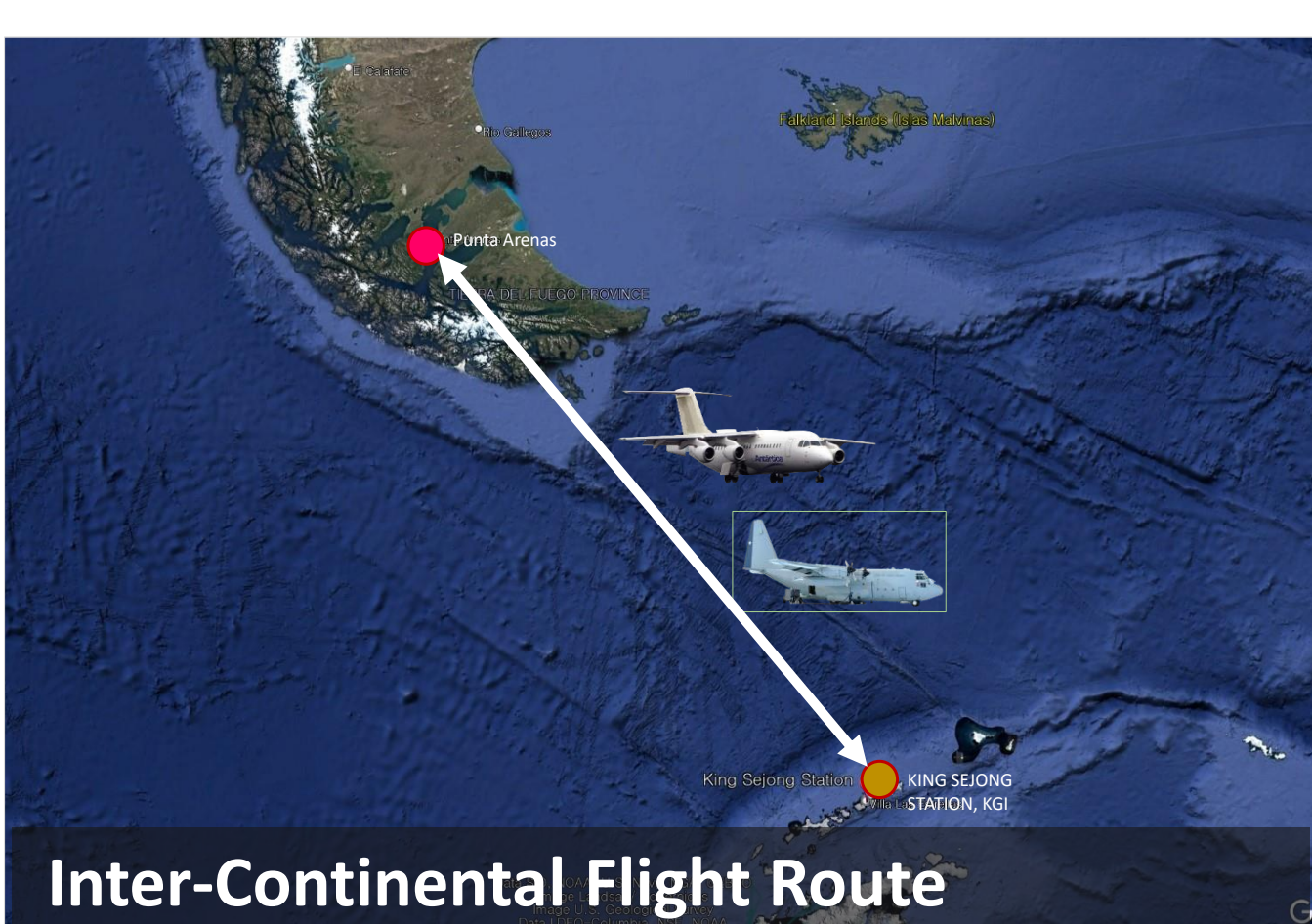
In the second phase during 2004 to the present, KOPRI started its own inter-continental flights by Chilean charter aircraft (DAP) once or twice during one single Antarctic season. By its operation, KOPRI was capable of having its stable transportation way and of extending its inter-continental flights collaboration with other countries in King George Island. Based on this, the number of visitors to KSJ has increased significantly, and active research activities such as joint research and international cooperation with other national programs have been expanded.

Currently, Korea has secured stable inter-continental flight operations by operating five to six times during every Antarctic season. In addition, these inter-continental flights seats are shared with other MNAPs, for strengthening the foundation for international cooperation, for establishing a framework for joint utilization, for cooperation of infrastructure resources on KGI. Recently KOPRI participates in Barter Points System with Chile, Spain, Poland, Korea and Turkiye for the collaboration in the field of logistics and operation including air network.

Furthermore, Korea is going to explore new opportunities to initiate new collaboration with other MNAPs. The KARP is going to share its own experience and lessons learned from the air network cooperation and collaboration from the past 35 years and its legacy.

KGI-BASED AIR NETWORK COLLABORATION AT A GLANCE

INBOUND BASIS	FIRST PHASE (1988 - 2003)	SECOND PHASE (2004 - 2022)
NUMBER OF PAX. (Annual Average)	55 PAX. 	153 PAX. 
INTER-CONTINENTAL AIRCRAFT OPERATION	PRIMARY: AIR FORCE (FAB, FACH, FAU) SECONDARY: ANI and DAP	PRIMARY: DAP-KOPRI (KOPRI-Chartered) SECONDARY: AIR FORCE (FAB, FACH, FAU)
AIR NETWORK COLLABORATION (Annual Average)	03 SEATS With CHILE and URUGUAY	49 SEATS With CHILE, CHINA, CZECH REPUBLIC, PORTUGAL, ROMANIA, RUSSIA, SPAIN, TURKIYE, USA and URUGUAY



Inter-Continental Flight Route



FACH in 1998



FAU in 2001



FACH in 2007



FACH in 2012



DAP-KOPRI in 2018



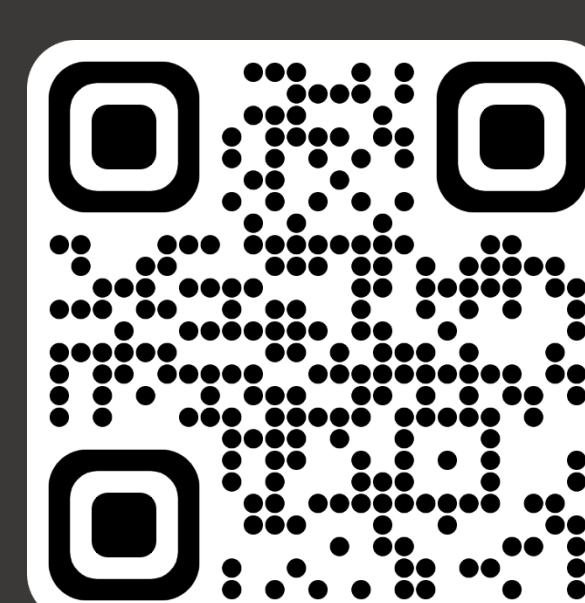
DAP-KOPRI in 2021



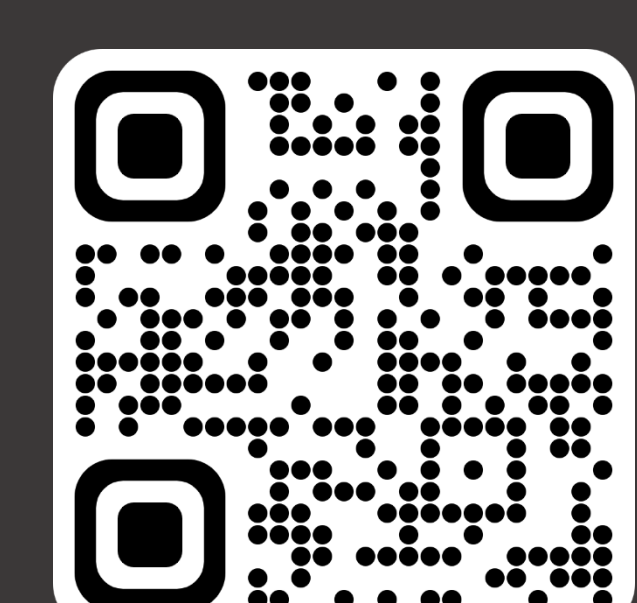
DAP-KOPRI in 2022

MINGU KANG (mgkang@kopri.re.kr)

Korea Polar Research Institute (KOPRI)
 Office of Station Operations
 Department of Logistics and Infrastructure Operations
 26 Songdomirae-ro, Yeonsu-gu, Incheon, 21990, Republic of Korea



Scan QR Code to Access KOPRI



Scan QR Code for King Sejong Virtual Tour